



DEPARTMENT OF MENTAL HEALTH

SARAH SQUIRRELL, COMMISSIONER

MOURNING FOX, DEPUTY COMMISSIONER

SHANNON THOMPSON, FINANCE MANAGER

DEPARTMENT OF MENTAL HEALTH

280 STATE DRIVE NOB 2 NORTH

WATERBURY, VT 05671

PHONE: 802-241-0090

OVERVIEW

- FY21 BAA
- Department of Mental Health Overview (Brief)
- Current COVID19 Impact, Priorities, Opportunities

MISSION: TO PROMOTE AND IMPROVE THE MENTAL HEALTH OF VERMONTERS.

Vision:

Mental Health will be a cornerstone of health in Vermont. People will live in caring communities with compassion for and a determination to respond effectively and respectfully to the mental health needs of all citizens. Vermonters will have access to effective prevention, early intervention, and mental health treatment and supports as needed to live, work, learn, and participate fully in their communities.



OVERVIEW AND RESPONSIBILITIES

Budget: 279M

**Oversight, Designation and
Collaboration with:**

- 10 Designated Agencies
- 2 Specialized Service Agencies
- 7 Designated Hospitals

Facilities

- Vermont Psychiatric Care Hospital
(25 beds)
- Middlesex Therapeutic Care
Residence (7 beds)

314 STAFF TOTAL

DMH Central Office

- Administrative Support
- Business Office
- Legal Services
- Research and Statistics Team
- Clinical Care Management Team
- Operations, Policy and Planning Team
- Quality Management Team
- Child, Adolescent and Family Team
- Adult Mental Health Services Team

VPCH & MTCR
253 Staff

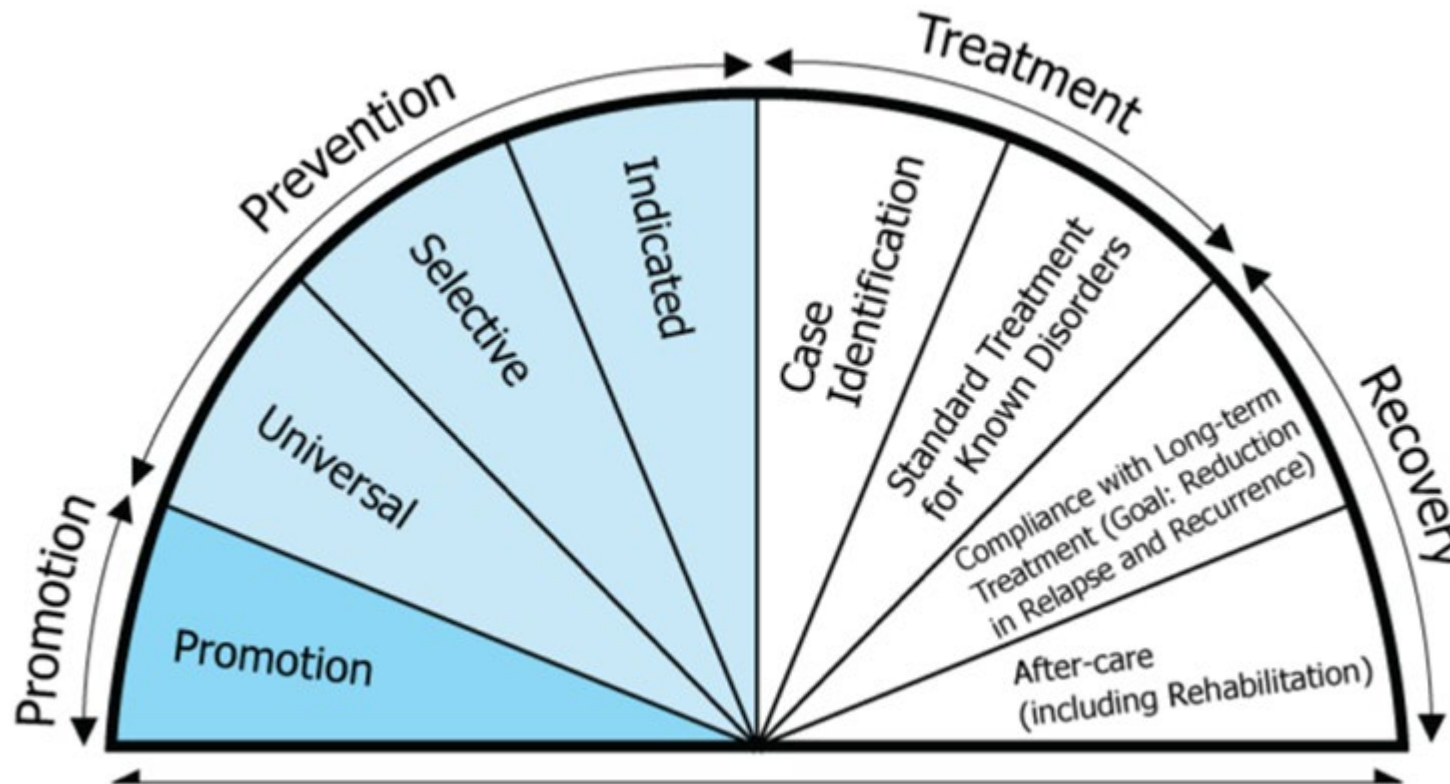
Notable Partnerships

Forensic psychiatrist, psychiatric consultation with primary care, child and adolescent psychiatric fellowship at UVM, Vermont Federation of Families for Children's Mental Health, Center for Health and Learning, Vermont Psychiatric Survivors, National Alliance on Mental Illness VT, Pathways Vermont and many others.

Collaborations

Other AHS departments, hospitals, other community providers, One Care, law enforcement, courts and others

PUBLIC HEALTH- MENTAL HEALTH INTERVENTION SPECTRUM



DESIGNATED PROVIDERS

Designated Agencies

- Clara Martin Center
- Counseling Services of Addison County
- Health Care and Rehabilitation Services of Southeastern Vermont
- Howard Center
- Lamoille County Mental Health Services
- Northwest Counseling and Support Services
- Northeast Kingdom Human Services
- Rutland Mental Health Services
- United Counseling Service
- Washington County Mental Health Services

Specialized Services Agencies

- Pathways Vermont
- Northeastern Family Institute

Designated Hospitals

- Brattleboro Retreat
- Central Vermont Medical Center
- Rutland Regional Medical Center
- University of Vermont Medical Center
- Windham Center
- Vermont Psychiatric Care Hospital (State-run)
- White River Junction VA Medical Center

State Secure Residential

- Middlesex Therapeutic Community Residence

RESIDENTIAL, CRISIS BED AND INPATIENT CAPACITY

Designated Agencies

- Adult Crisis Beds: 38 beds
- Youth Crisis Beds: 12 beds
- Adult Intensive Residential: 42 beds

Peer Service Agencies

- Adult Crisis Beds: 2 beds
- Adult Intensive Residential: 5 beds

Physically Secure Residential

- Middlesex Therapeutic Community Residence: 7 beds

Designated Hospitals

- Adult – Level 1 involuntary: 45 beds
 - VPCH 25
 - Brattleboro Retreat 14
 - RRMC 6
- Adult – Non-Level 1 (involuntary and voluntary): 156 beds
 - CVMC 14
 - RRMC 17
 - UVMC 28
 - Windham Center 10
 - VA Medical Center 12
 - Brattleboro Retreat 75
- Children and Youth: 30 beds
 - Adolescent 18
 - Children 12

COMMUNITY PROGRAMS

Program	Description
Adult Outpatient (AOP)	Provides services for adults who do not have prolonged serious disabilities but who are experiencing emotional, behavioral, or adjustment problems severe enough to warrant professional attention
Community Rehabilitation and Treatment (CRT)*	Provides services for adults with severe and persistent mental illness
Children and Families (C&F)*	Provide services to children and families who are undergoing emotional or psychological distress or are having problems adjusting to changing life situations.
Emergency Services	Serves individuals who are experiencing an acute mental health crisis. These services are provided on a 24-hour a day, 7-day-per-week basis with both telephone and face-to-face services available as needed.
Advocacy and Peer Services	Broad array of support services provided by trained peers (a person who has experienced a mental health condition or psychiatric disability) or peer-managed organizations focused on helping individuals with mental health and other co-occurring conditions to support recovery

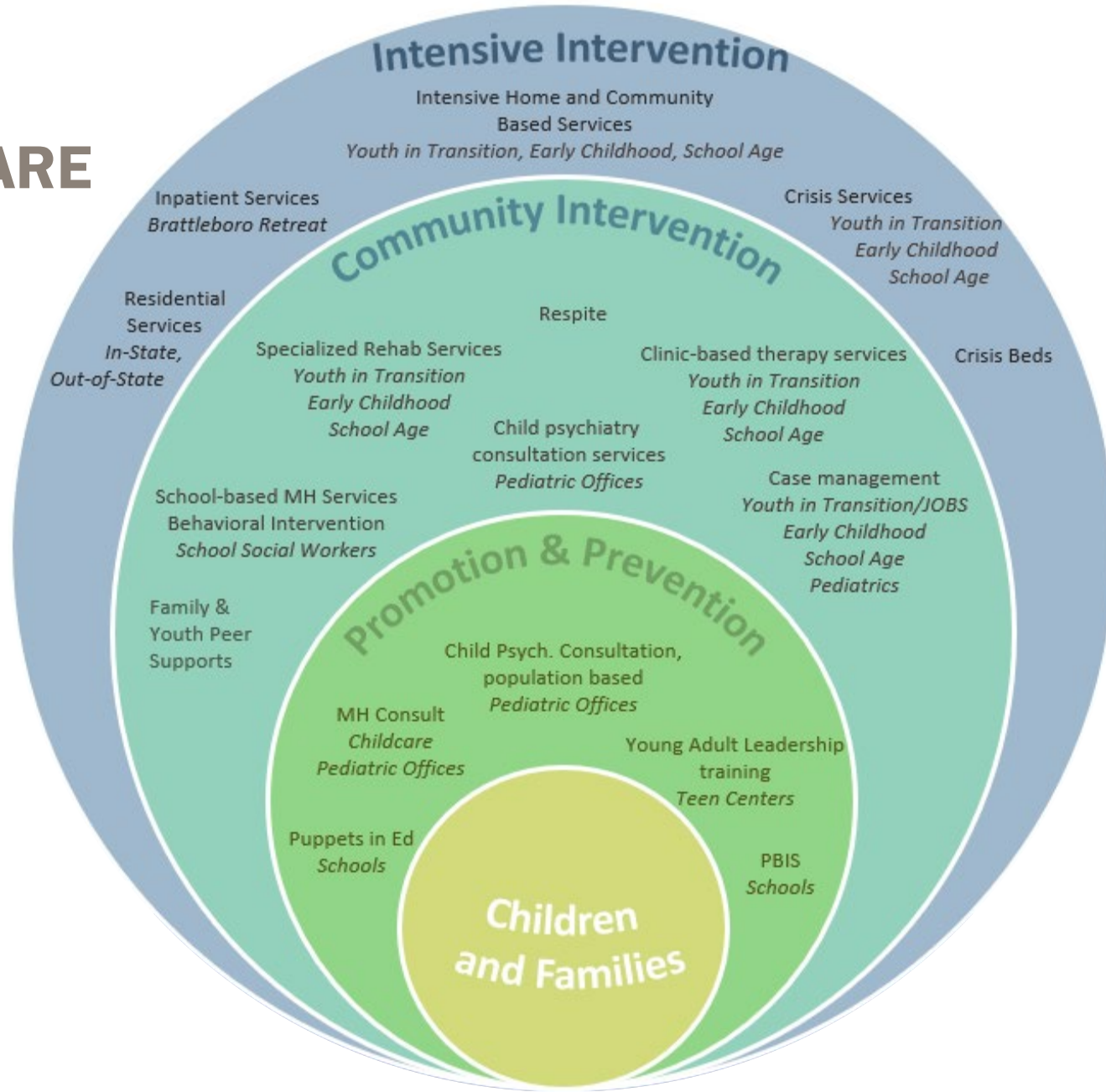
**mandated service population*



CHILDREN, YOUTH & FAMILIES

OVERVIEW AND PRIORITIES

CHILDREN'S MENTAL HEALTH SYSTEM OF CARE





ADULT MENTAL HEALTH

OVERVIEW, PRIORITIES, DATA AND INITIATIVES

ADULT SYSTEM OF CARE

INPATIENT HOSPITALIZATION

Services for adults at risk of harm to self or others

Level One Inpatient

3 Facilities

45 Beds

General Inpatient

7 Facilities

142 Beds



SECURE RESIDENTIAL

Services for adults to support recovery in a secure environment

Secure Residential

1 Facility

7 Beds



INTENSIVE RESIDENTIAL PROGRAMS

providing additional services to adults recently discharged to support recovery

Intensive Recovery Residential

5 Residences

42 Beds

Peer-run Residential

1 Residence

5 Beds



CRISIS SUPPORTS AND RESPONSE

Services and supports for adults in crisis

Mental Health Crisis Beds

12 Facilities

38 Beds

- Crisis assessment, support, and referral
- Continuing education and advocacy



COMMUNITY MENTAL HEALTH

For adults seeking mental health services

Group Residential Homes

19 Homes

152 Beds

Shelter & Care Vouchers

DMH Housing Vouchers

- Individual, family, and group therapy
- Clinical assessment
- Medical consultation and medication
- Service planning and coordination
- Community supports & employment services
- Housing and home supports
- Peer programming



LEGEND



Peer-run Services and Residential Care



Department of Mental Health (DMH)



Designated Agencies and Specialized Services Agencies

Private, non-profit service providers responsible for program delivery, local planning, service coordination, delivery and monitoring outcomes within their geographic region. SSAs provide a distinctive approach to service delivery or services that meet distinctive individual needs.



Private Providers

Psychiatrists, Psychologist, Nurse Practitioners, Licensed Social Workers, Physician Assistants, Licensed Mental Health Clinicians, Community Hospitals

DMH Residential and Designated Hospital (Inpatient) Beds All Ages by County FY20



* BR Linden (12 beds) closing Jan 2021
 **NFI Hospital Diversion Capacity 6, Currently only 4 open beds
 ***Residential programs that are primarily utilized by DCF, but accessible to DMH in rare circumstances

SYSTEM OF CARE | IMPACTS

- Social distancing/quarantine
- Remote learning
- Access gaps
- Co-Occurring
- Overall well-being and wellness
- Workforce

SYSTEM OF CARE | PRIORITIES

Healthcare Provider Stability

- Healthcare Stabilization Program

Inpatient Demand & Capacity

- Demand trends as a result of COVID19
- Status of **12 new level 1 beds** at the Brattleboro Retreat

Emergency Department Wait Times

- Current data

SUICIDE PREVENTION

- CRF
- CDC Grant

Child and Youth Mental Health

- School Based Mental Health Services

Residential Capacity Community Capacity

- Replacement of Middlesex Secure Residential

SYSTEM OF CARE | OPPORTUNITIES

TELEHEALTH

- Expansion of telehealth

CURRENT FEDERAL FUNDING/GRANTS

- FEMA Crisis Counseling Grant – CovidSupportVT
- SAMHSA Grant - \$1M
 - Expansion of Emergency Services & Peer Services
- CDC 5 Year Comprehensive Suicide Prevention Grants
 - DMH/VDH received 5-year \$3.9M Comprehensive Suicide Prevention Grant

Anticipated Federal Funding/Grants

- SAMHSA Grant Extension & Additional 2.8M
- Increases to Mental Health Services Block Grant
- Increases for Suicide Prevention Programs
- Increases for Project AWARE

MENTAL HEALTH RELATED LEGISLATIVE REPORTS

<p>Act 79 (18 VSA 174 § 7256) requires the Department to submit an annual report regarding the extent to which individuals with a mental health condition or psychiatric disability receive care in the most integrated and least restrictive setting available.</p>	<p>Annually, on or before January 15</p>
<p>Act 114 addresses three areas of mental-health law; the administration of nonemergency involuntary psychiatric medication in inpatient settings for people on orders of hospitalization, the administration of nonemergency involuntary psychiatric medication for adults on orders of non-hospitalization (community commitments), and continuation of ninety-day orders of non-hospitalization.</p>	<p>Annually, on or before January 15 (2020 extension to January 31st)</p>
<p>Act 140: Reports on the Conditions of Funding for Brattleboro Retreat, including Employee Relations and Patient Quality of Care.</p>	<p>February 15, 2021</p>
<p>Act 200 (S.203) - An Act relating to system improvements of the Mental Health System Section 7 – Requires the Commissioner to collect information from hospitals in the State that have either an inpatient psychiatric unit or emergency department receiving patients with psychiatric health needs.</p>	<p>January 31st, annually for three years (2019-2021)</p>